



**A SIMPLE GUIDE  
TO UNDERSTANDING  
ENERGY METERS**



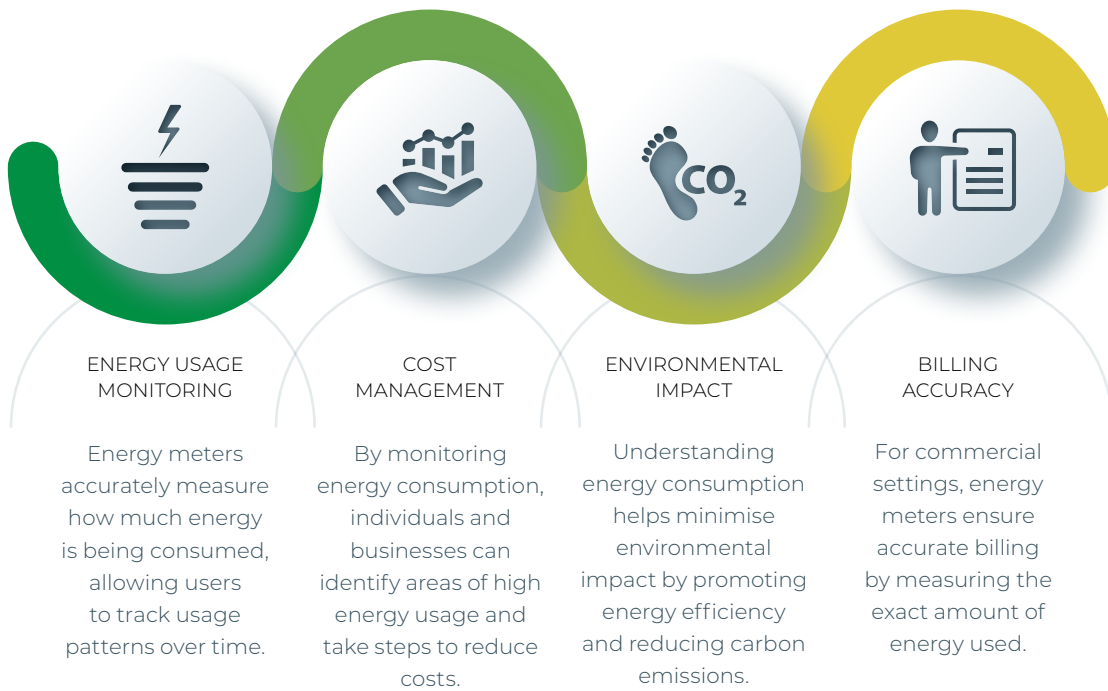
ENERGY AND AUTOMATION

## A SIMPLE GUIDE TO UNDERSTANDING ENERGY METERS

Energy meters are invaluable tools for tracking and managing energy consumption in both residential and commercial settings. These devices provide accurate measurements of energy usage, helping individuals and businesses monitor their energy consumption, identify areas for improvement, and ultimately, save money. In this guide, we'll explore the importance of energy meters, the different types available, and the components that make up a complete energy management system.

# WHY ENERGY METERS ARE USEFUL

Energy meters play a crucial role in energy management by providing detailed insights into energy usage. Here are some key reasons why energy meters are useful:



# DIFFERENT TYPES OF ENERGY METERS



## ANALOGUE METERS

These are traditional electromechanical meters that use rotating dials to measure energy consumption. While accurate, they require manual reading and are being phased out in favour of digital meters.

### KEY BENEFITS

- Simple and reliable
- Low initial cost
- No external power source required



## DIGITAL METERS

Digital meters display energy usage in digital format, making them easier to read and more accurate than analogue meters. They can be programmed to record usage at specific intervals, providing detailed data for analysis.

### KEY BENEFITS

- Accurate readings
- Easier to read than analogue meters.
- Can be programmed for specific intervals



## SMART METERS

Smart meters are digital meters equipped with communication technology that allows two-way communication between the meter and the utility company. They provide real-time data on energy usage and can transmit this data remotely, eliminating the need for manual reading.

### KEY BENEFITS

- Real-time data on energy usage
- Remote monitoring and control
- Enables dynamic pricing and demand response programs



## SUB METERS

Sub-meters (MID) are used in commercial or multi-tenant buildings to measure energy usage in specific areas or by individual tenants. They help identify areas of high consumption and allocate costs accurately.

### KEY BENEFITS

- Granular data on energy usage
- Helps identify energy waste and inefficiencies.
- Allows for accurate cost allocation
- Assists with billing accuracy

# COMPONENTS OF AN ENERGY MANAGEMENT SYSTEM

A complete energy management system consists of several components working together to monitor, analyse, and optimise energy usage. These components include:

**Energy Meters:** Measure energy consumption accurately.

**Data Acquisition System (DAS):** Collects data from energy meters and other sensors.

**Energy Management Software:** Analyses energy data, identifies usage patterns, and generates reports.

**Control Systems:** Automate energy-consuming systems for optimal efficiency.

**Energy Efficiency Measures:** Implement changes based on data analysis to reduce energy consumption.

Energy meters are indispensable tools for managing energy consumption effectively. By providing accurate data on energy usage, they help individuals and businesses identify areas for improvement, reduce costs, and minimise environmental impact. Whether it's an analogue meter for a residential property or a smart meter for a commercial building, choosing the right

energy meter is the first step towards efficient energy management. When combined with a comprehensive energy management system, energy meters empower users to make informed decisions and achieve energy efficiency goals.

To learn more about energy management with LOVATO, you can **download the LOVATO Energy Management brochure here**.

For the latest news and innovations, please follow us on LinkedIn.





# WHERE PRECISION MEETS ENDURANCE

100 YEARS

**Lovato**  
**electric**

ENERGY AND AUTOMATION

LOVATO Electric's range of electromechanical and electronic devices are meticulously crafted and tested to ensure the utmost safety and reliability. Backed by a century of Italian precision manufacturing and expertise, our products are designed with precision and built for endurance.

**With a substantial UK based stock holding and bespoke assembly, we offer fast delivery of components across mainland UK and Ireland.**



01384 899700 | [lovato.co.uk](http://lovato.co.uk) | [sales@lovato.co.uk](mailto:sales@lovato.co.uk)